

MT



PEC

Montana voters support K-12 Public Education!

A K-12 Issue Spotlight

Summary of polling results commissioned
by the Montana Public Education Center,
late August 2014

The Montana Public Education Center is a joint initiative of the following groups



MTSBA



MONTANA
QUALITY EDUCATION
COALITION

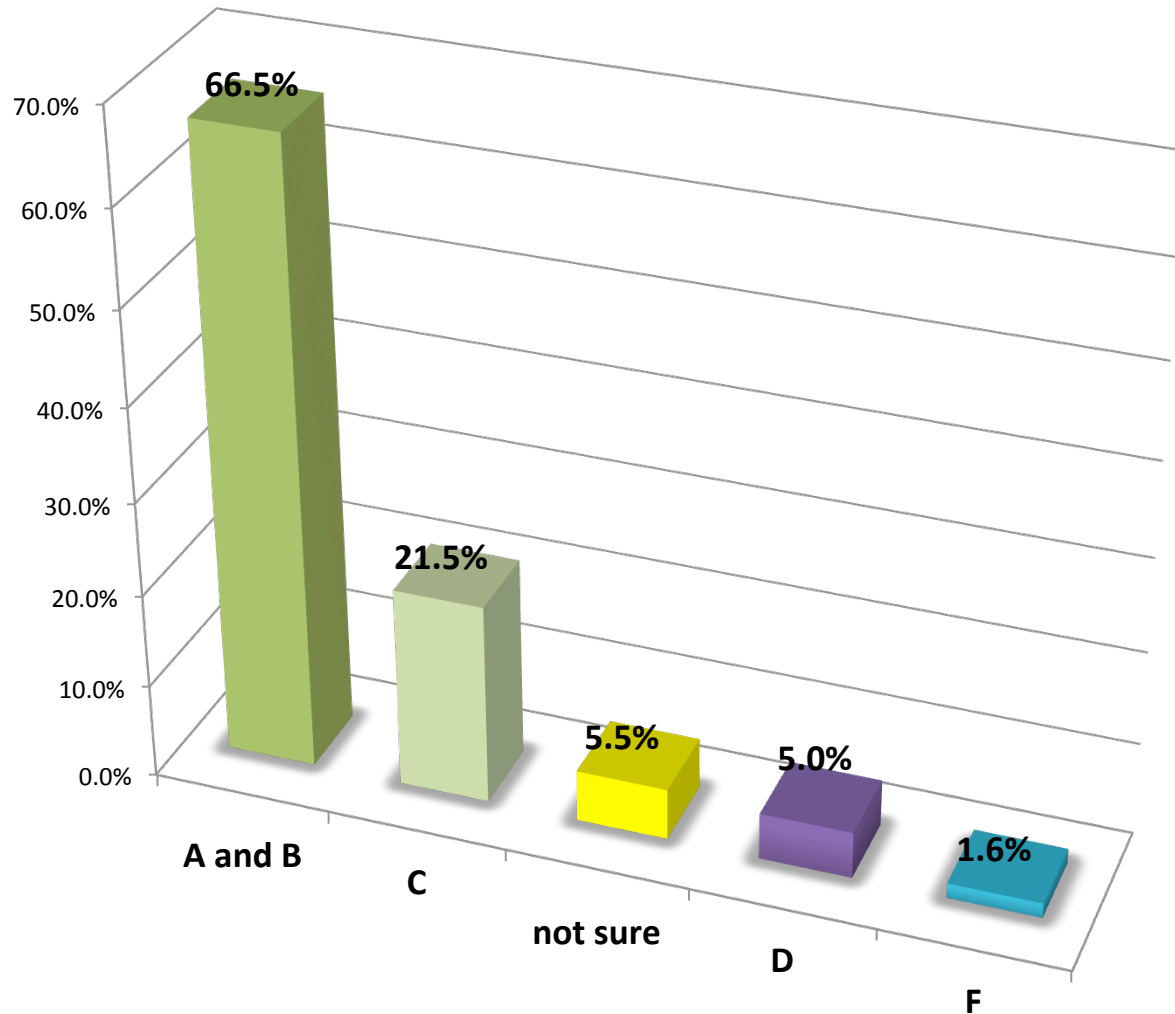


Source and Methodology

- Poll jointly commissioned by the Montana Public Education Center, a joint initiative of the following groups:
 - Montana Association of School Business Officials
 - MEA-MFT
 - Montana Quality Education Coalition
 - Montana Rural Education Association
 - Montana School Boards Association
 - School Administrators of Montana
- Poll conducted by Zogby Analytics, an international polling firm that has been the most accurate in presidential elections since 1996.
- Live operator telephone survey of 500 likely voters in Montana, conducted August 11-22, 2014.
- Margin of Error of +/- 4.5%.

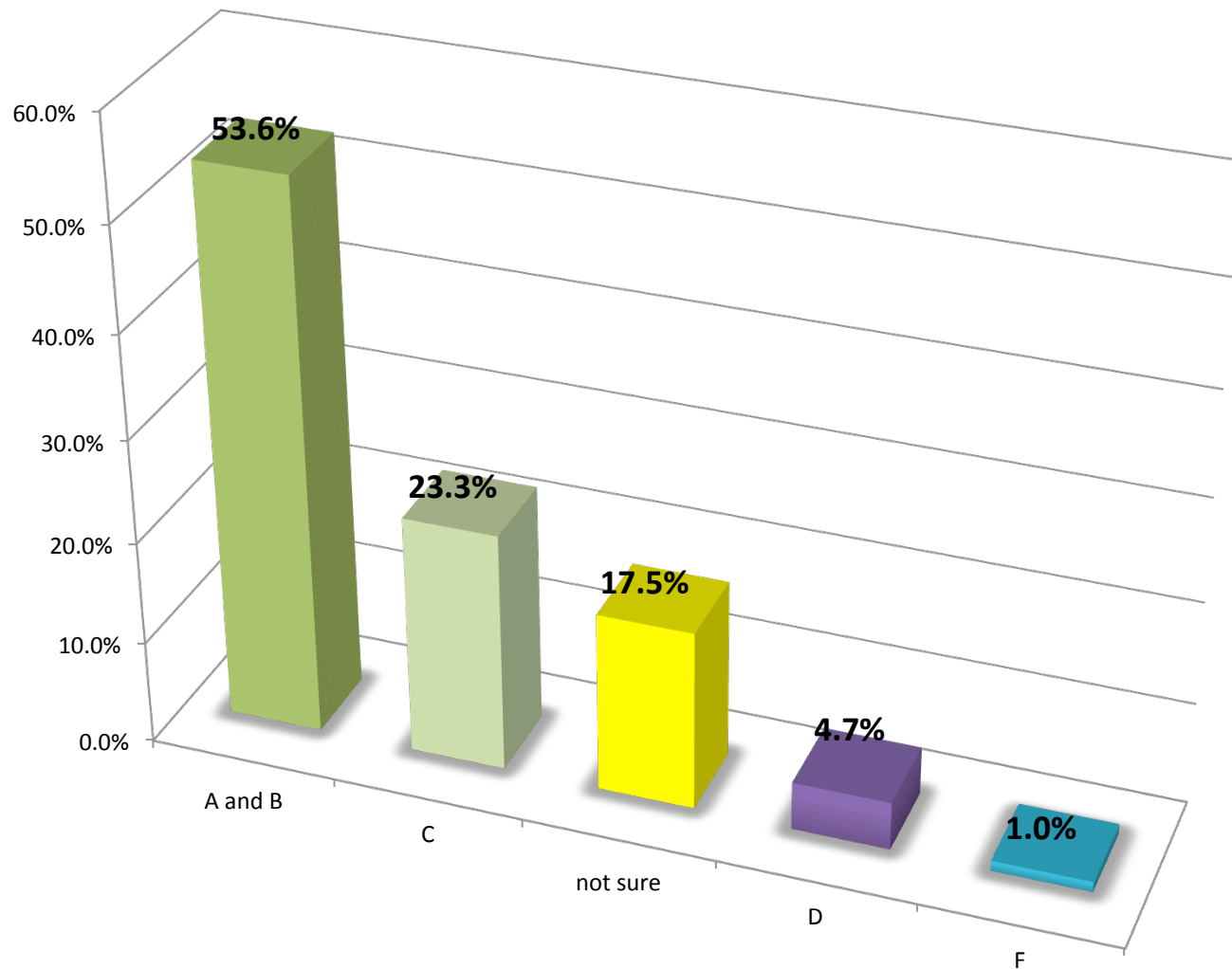
VOTERS LOVE THEIR COMMUNITY SCHOOLS

MONTANA VOTERS' OPINIONS REGARDING THE QUALITY OF THEIR OWN LOCAL COMMUNITY PUBLIC SCHOOLS



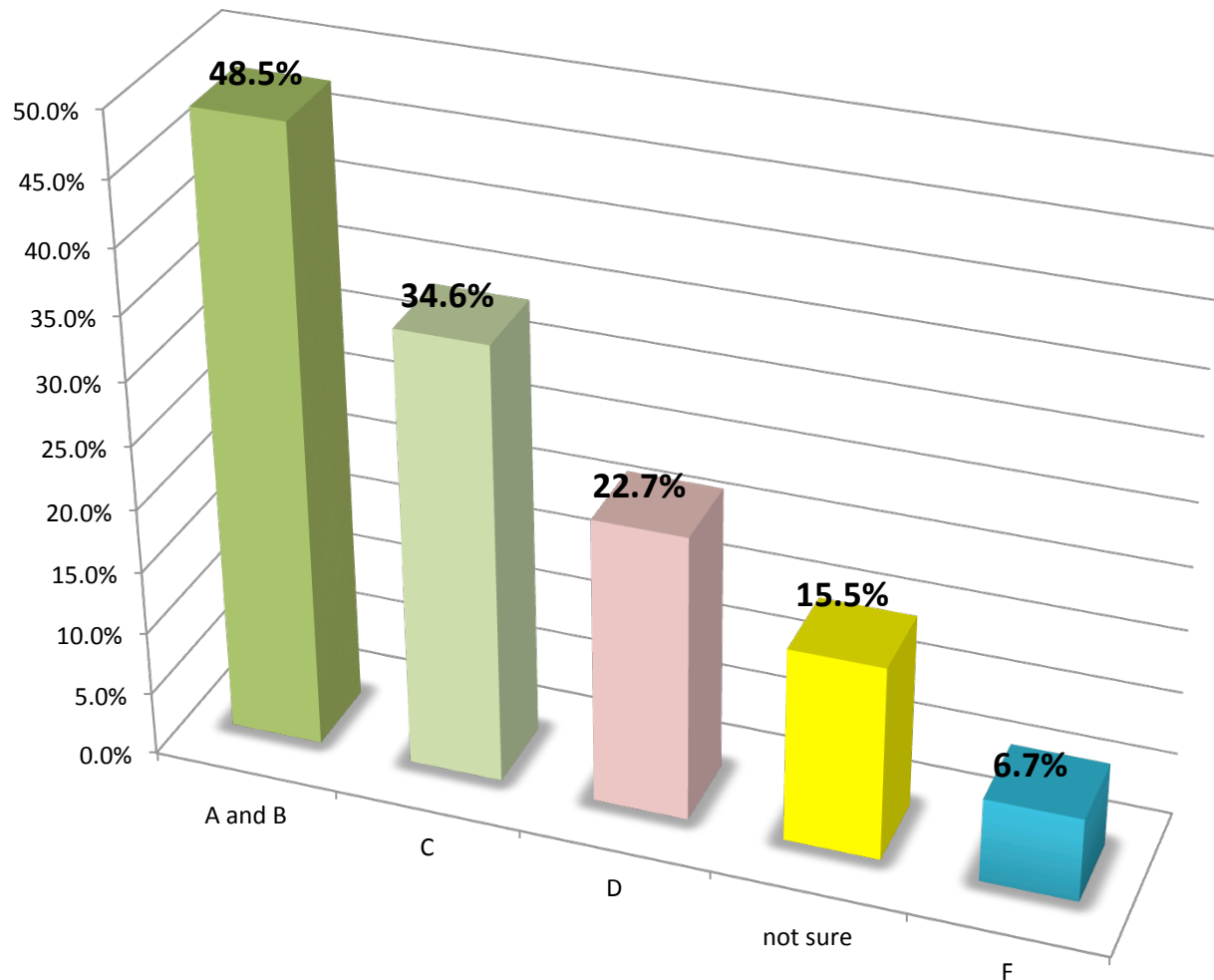
GRADING MONTANA'S SCHOOLS

MONTANA VOTERS' OPINIONS REGARDING THE QUALITY OF PUBLIC SCHOOLS IN MONTANA



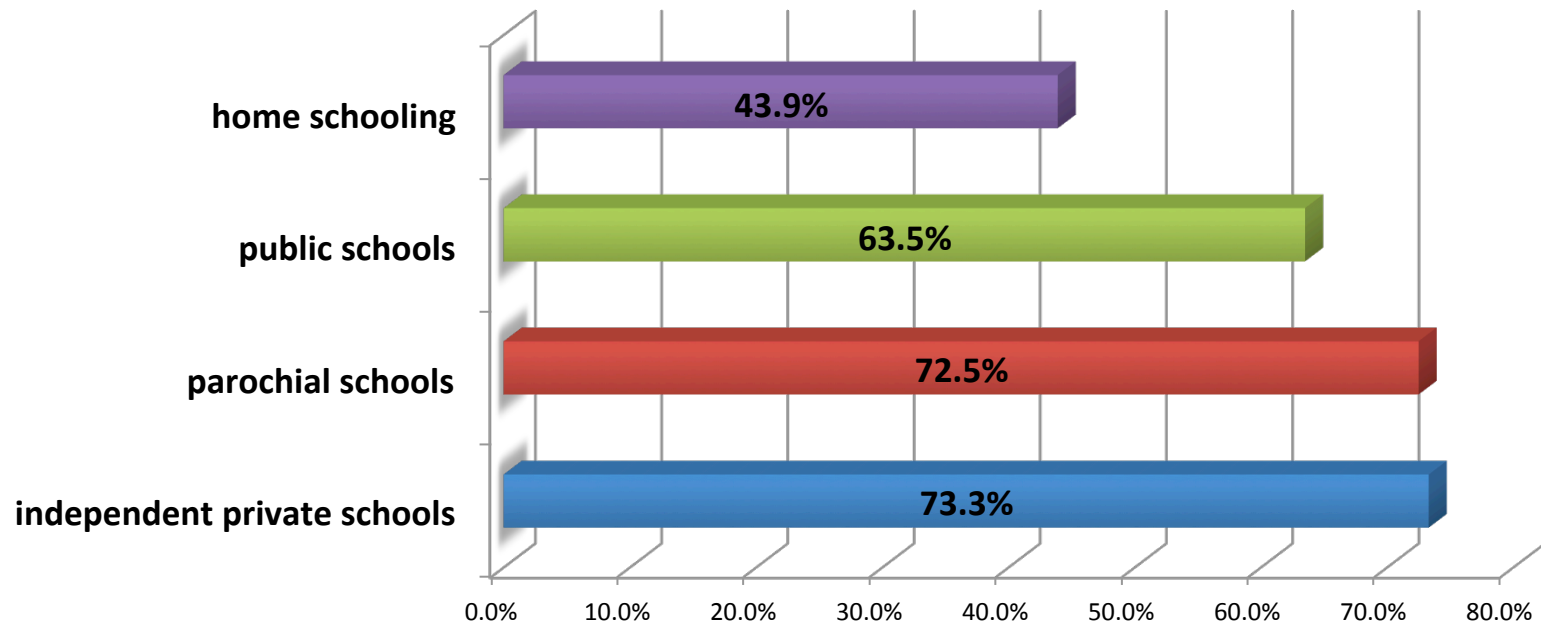
GRADING THE NATION'S SCHOOLS

MONTANA VOTERS' OPINIONS REGARDING THE QUALITY OF PUBLIC SCHOOLS IN THE NATION



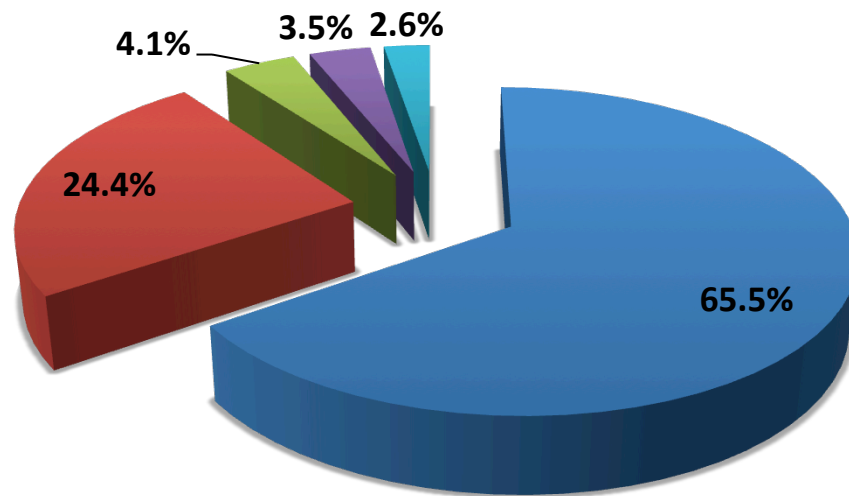
VOTER PERCEPTIONS OF QUALITY – RELATIVELY EQUAL WITHIN THE POLL'S MARGIN OF ERROR OF +/- 4.5%

**MONTANA VOTERS' PERCEPTIONS REGARDING THE RELATIVE QUALITY OF
PUBLIC AND PRIVATE SCHOOL OPTIONS**
(percent identifying excellent or good)



VOTERS BELIEVE SCHOOL CONSOLIDATION SHOULD BE DETERMINED LOCALLY

MONTANA VOTERS' OPINIONS REGARDING WHO SHOULD DECIDE WHETHER TWO OR MORE SCHOOL DISTRICTS MUST CONSOLIDATE

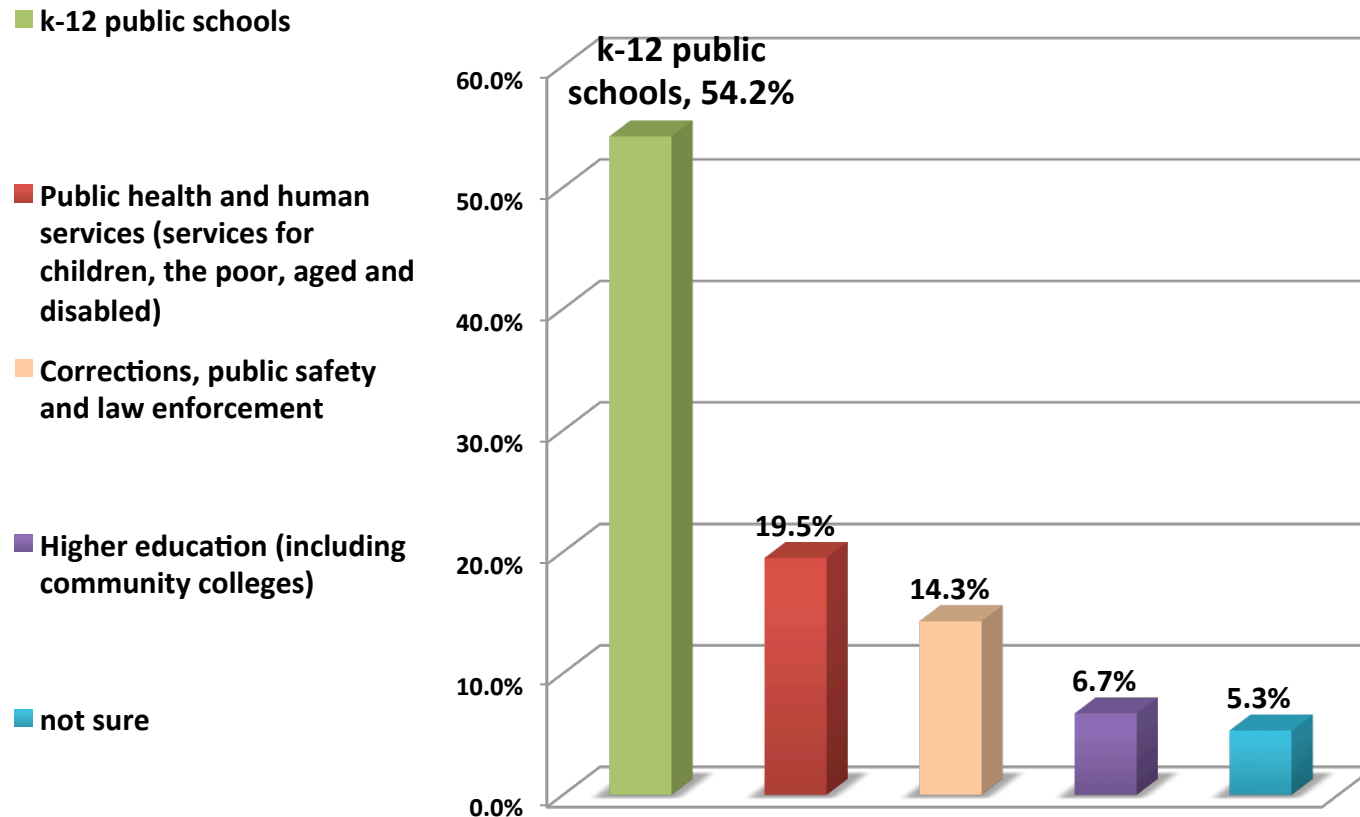


- Voters in school districts affected by the change in structure
- Elected school boards of the districts affected by the change in structure
- State Legislature
- Executive Branch (Governor, State Superintendent)
- not sure

VOTERS WANT TO SEE K-12 PRIORITIZED FIRST IN THE STATE BUDGET!

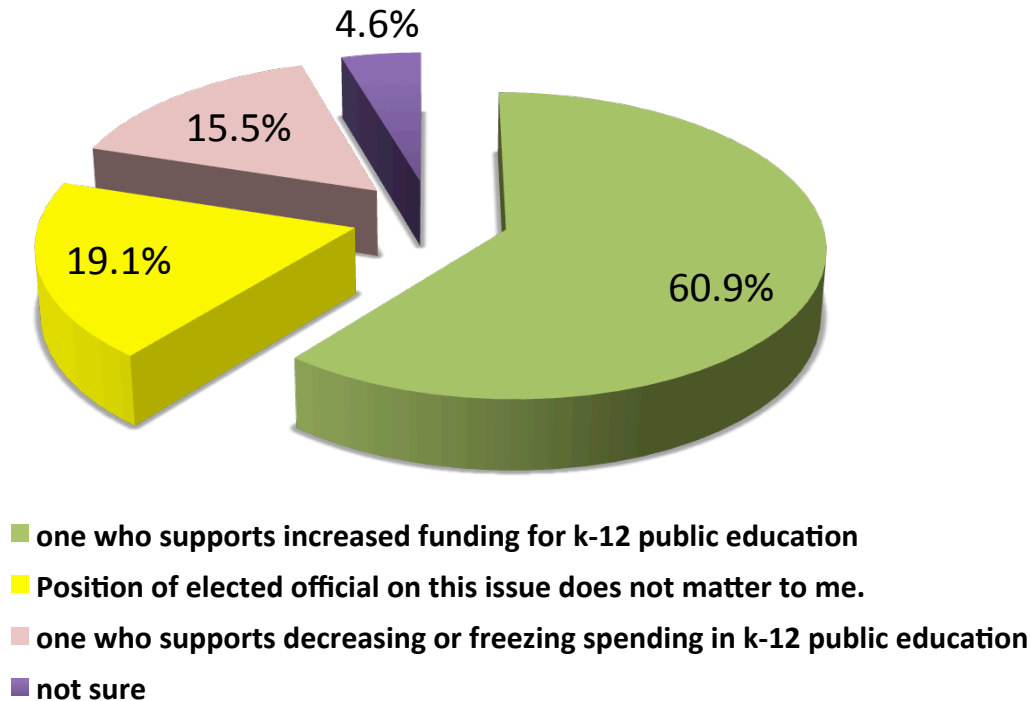
STATE BUDGET PRIORITIES FOR MONTANA VOTERS

When it comes to how state government spends your tax dollars, which of the following areas do you think should be the highest priority?



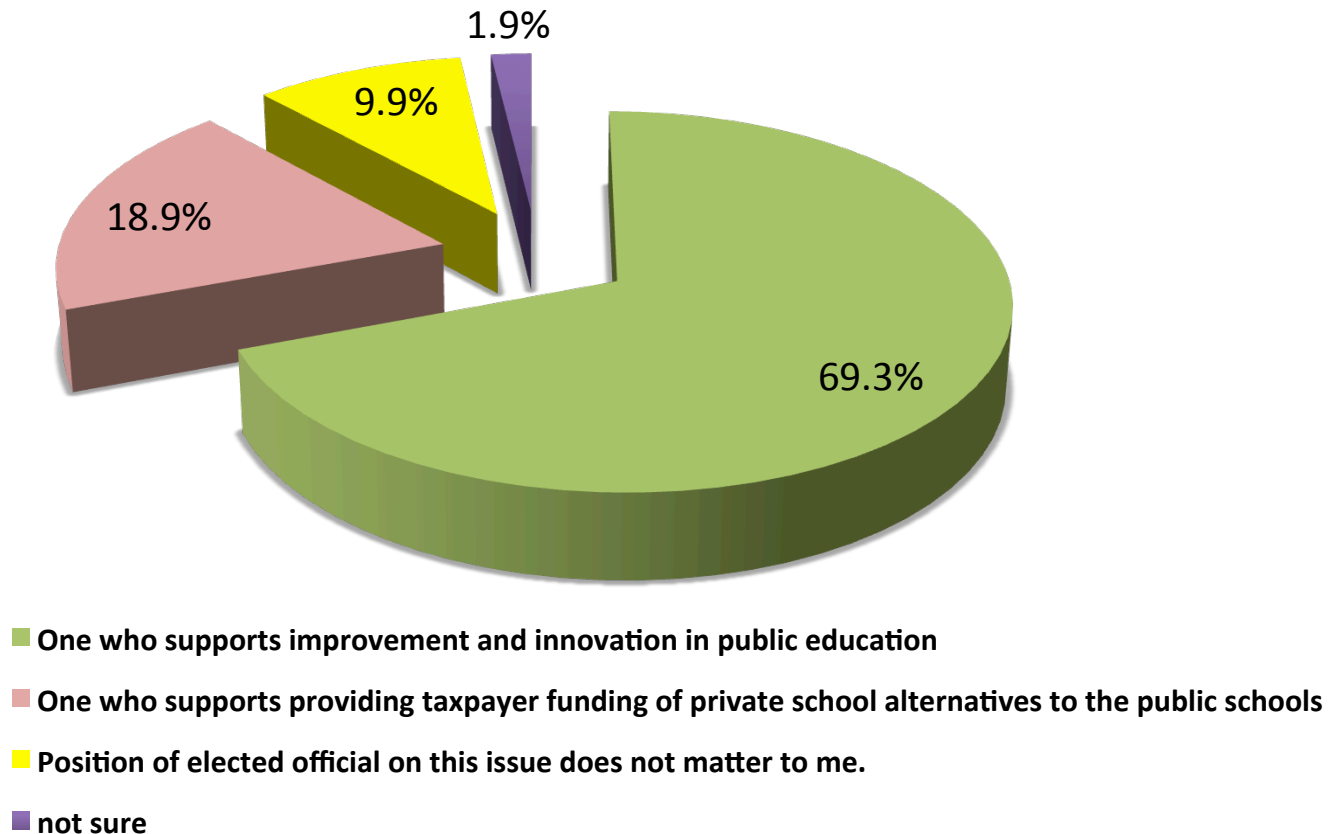
VOTERS SUPPORT ELECTED OFFICIALS WHO SUPPORT PUBLIC EDUCATION

Which type of elected official do you support more?



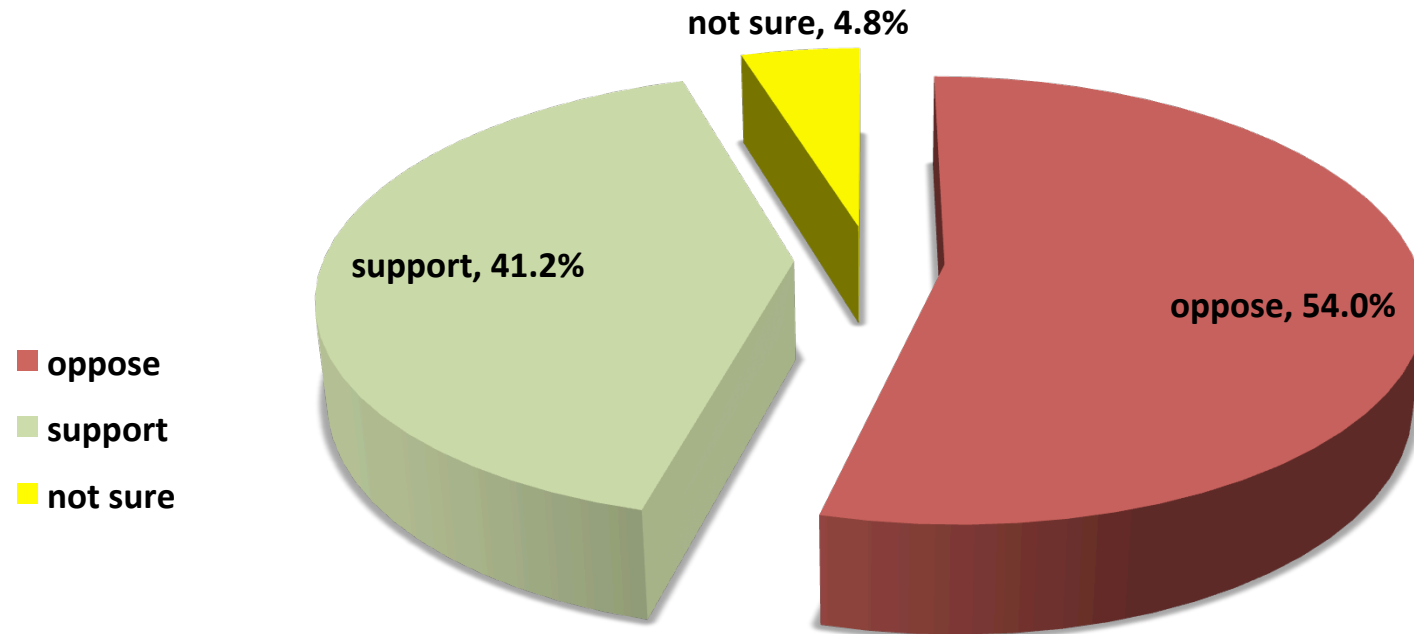
VOTERS SUPPORT ELECTED OFFICIALS WHO SUPPORT IMPROVING PUBLIC EDUCATION OVER THOSE SUPPORTING TAXPAYER FUNDED ALTERNATIVES TO PUBLIC EDUCATION

Which type of elected official do you support more?



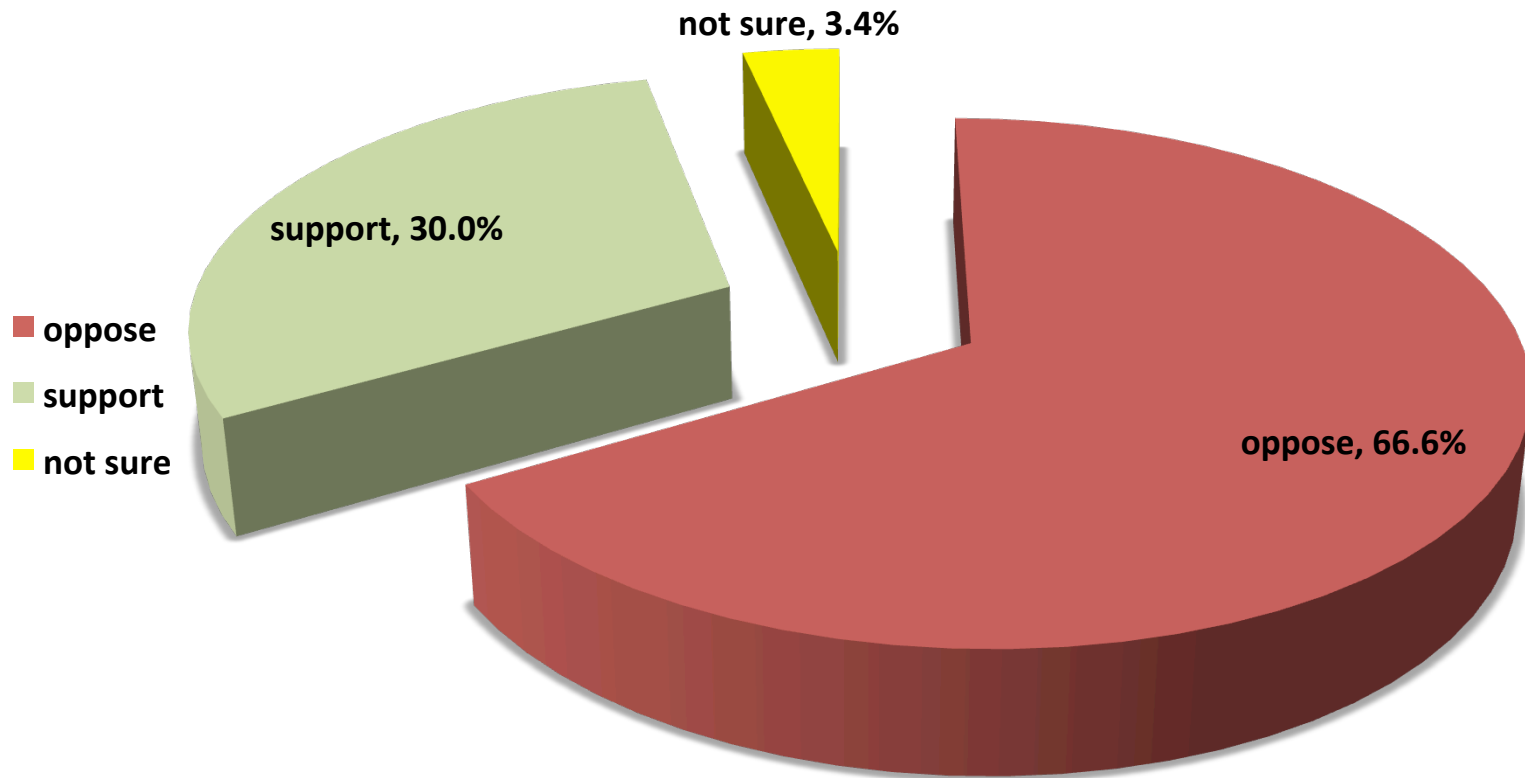
VOTERS OPPOSE TAX BENEFITS FOR PAROCHIAL SCHOOLS

MONTANA VOTERS' OPINIONS ON TAX BENEFITS FOR TUITION AT RELIGIOUS SCHOOLS



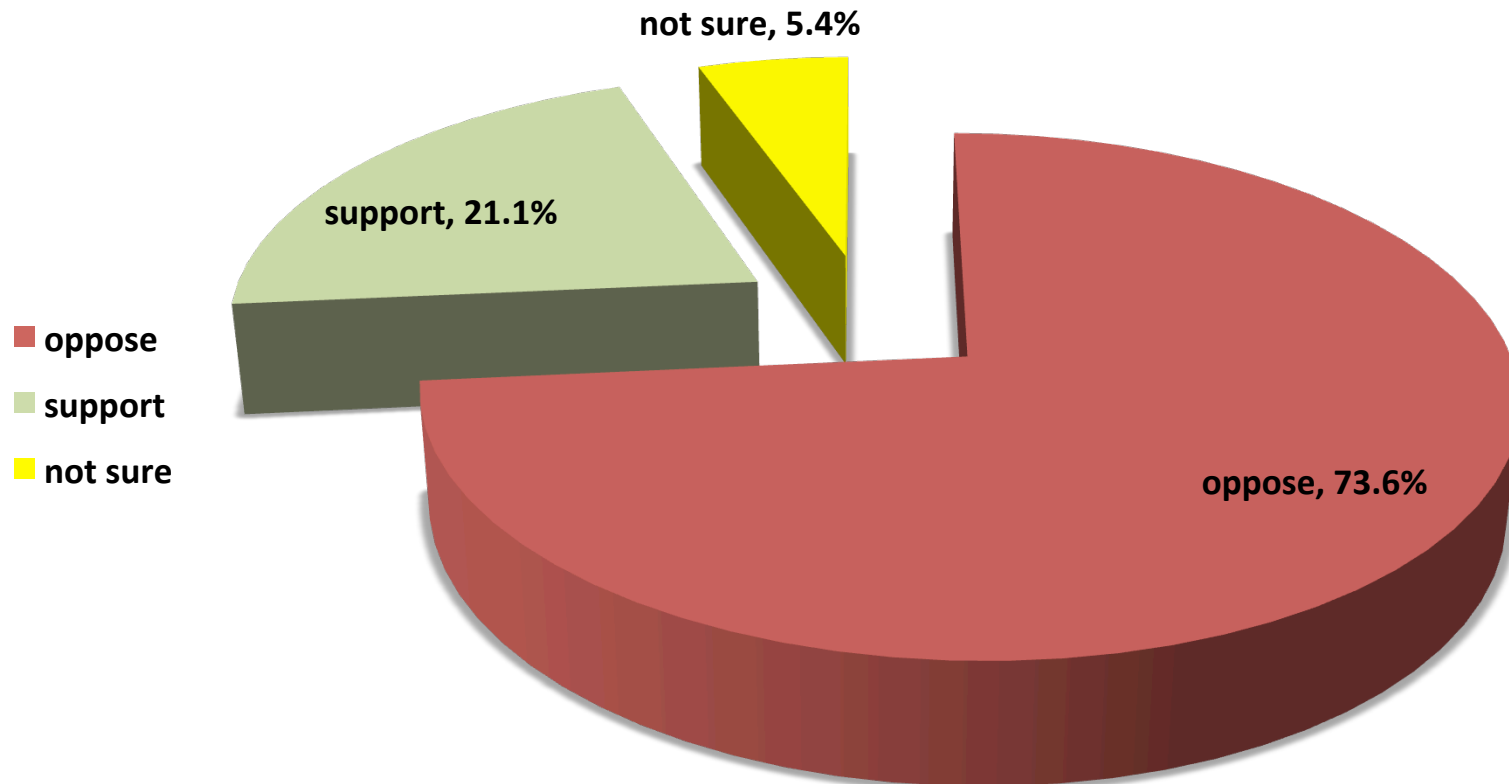
VOTERS OPPOSE TAX BENEFITS FOR PRIVATE SCHOOLS WITHOUT COMMUNITY-ELECTED SCHOOL BOARDS

**MONTANA VOTERS' OPINIONS ON TAX BENEFITS FOR TUITION AT PRIVATE
SCHOOLS WITHOUT COMMUNITY ELECTED SCHOOL BOARDS**



VOTERS OPPOSE TAX BENEFITS FOR PRIVATE SCHOOLS NOT SUBJECT TO THE PUBLIC'S RIGHT TO KNOW AND PROVIDE INPUT

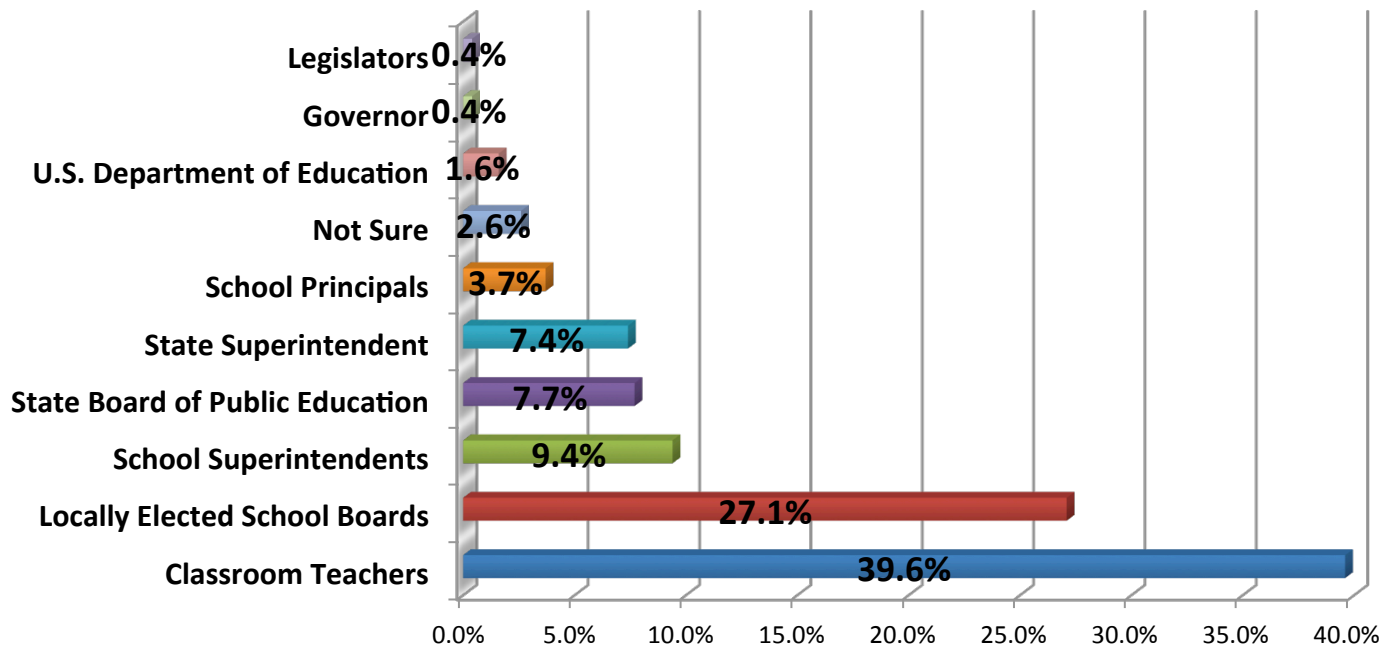
**MONTANA VOTERS' OPINIONS ON TAX BENEFITS FOR TUITION AT PRIVATE
SCHOOLS NOT SUBJECT TO OPEN MEETING, PUBLIC DOCUMENT AND PUBLIC
INPUT LAWS**



VOTERS TRUST EDUCATORS MOST!

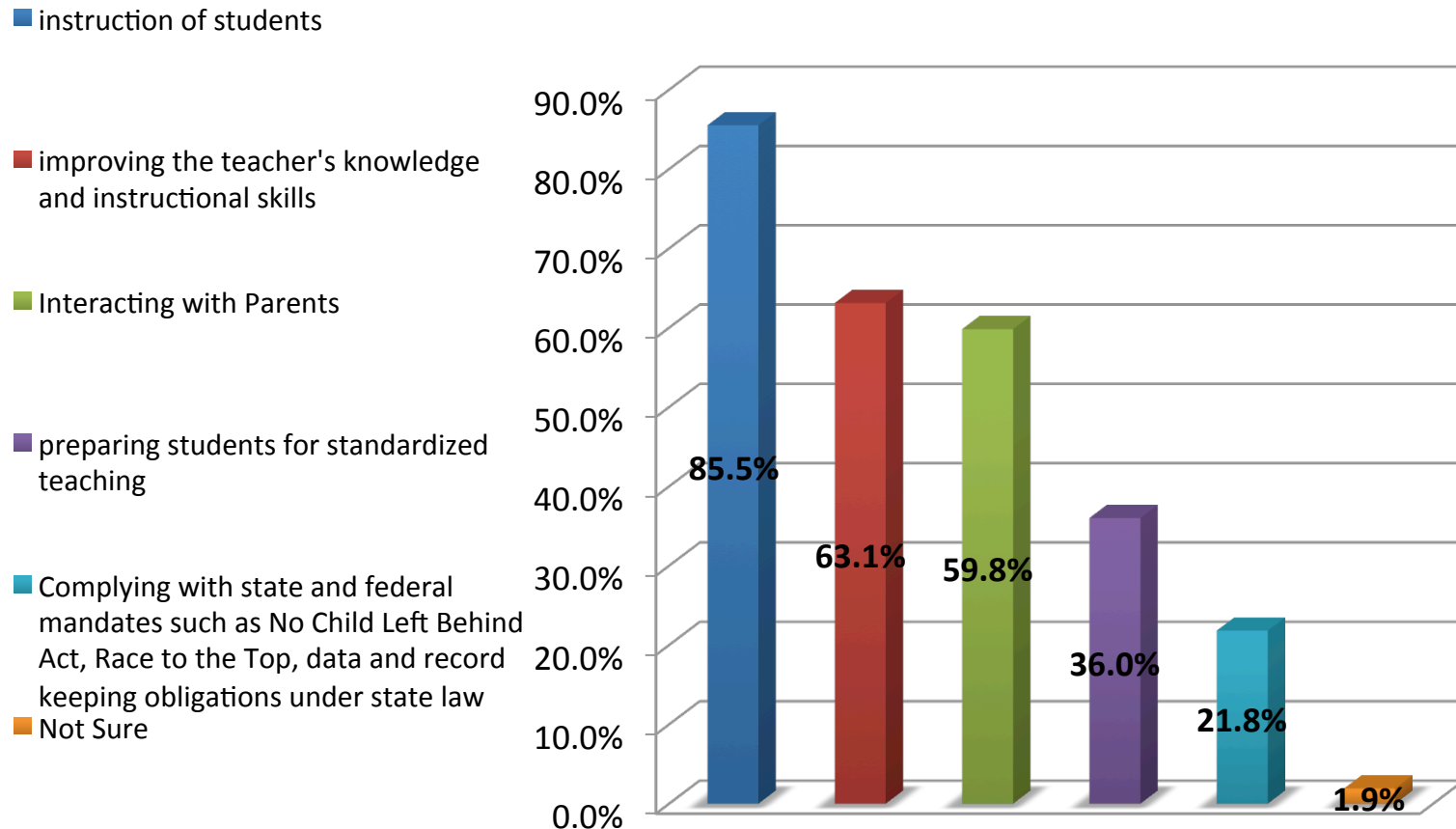
Who among the following public employees and officials do you trust the most when it comes to deciding what is best academically for students in Montana's public schools?

**WHO DO MONTANA VOTERS TRUST TO DO WHAT IS BEST
ACADEMICALLY FOR STUDENTS IN PUBLIC SCHOOLS?**



VOTERS WANT TEACHERS TO HAVE TIME TO TEACH!

Montana Voters' Preferred Uses of a Classroom Teacher's Time



VOTERS WANT SCHOOL ADMINISTRATORS TO HAVE TIME FOR INSTRUCTIONAL LEADERSHIP!

■ Providing instructional oversight, guidance and evaluation of classroom teachers

■ Keeping the public informed regarding the programs, services and performance of the public schools

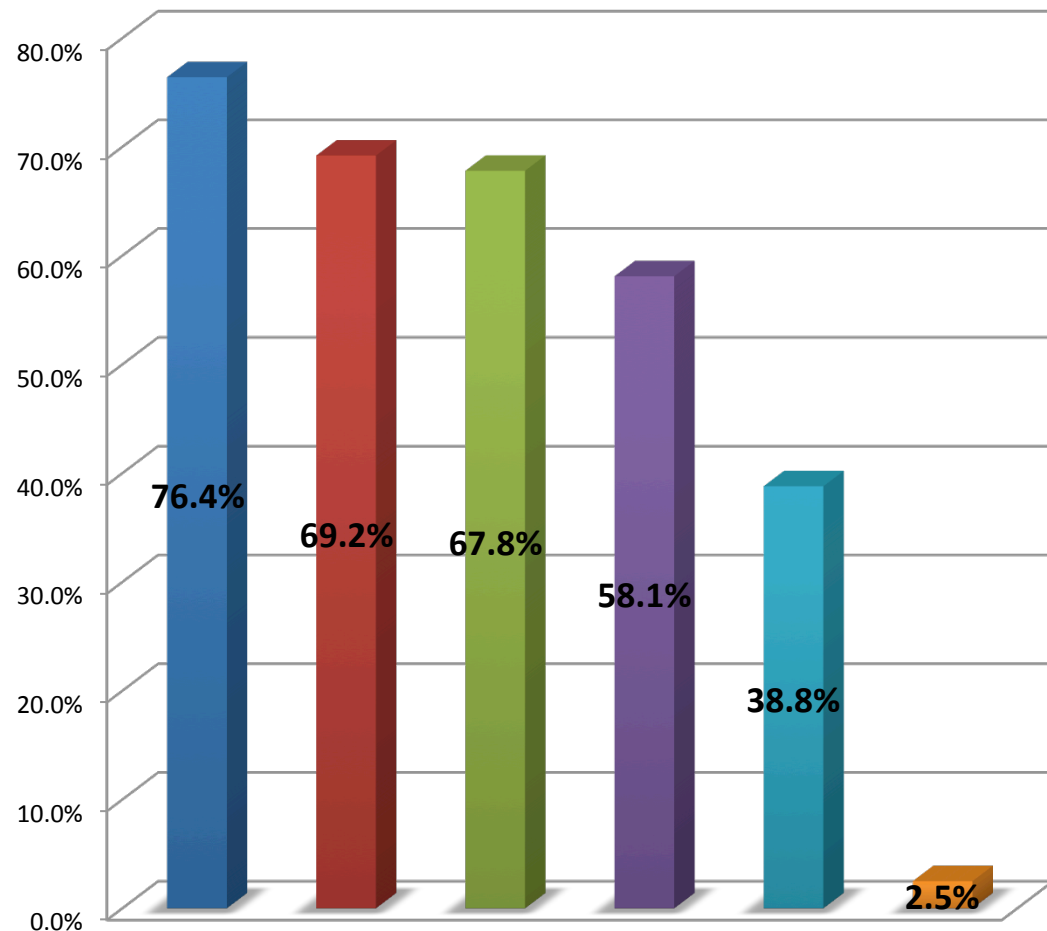
■ interacting with parents

■ regulating student conduct

■ Complying with state and federal mandates such as No Child Left Behind Act, Race to the Top, data and record keeping obligations under state law

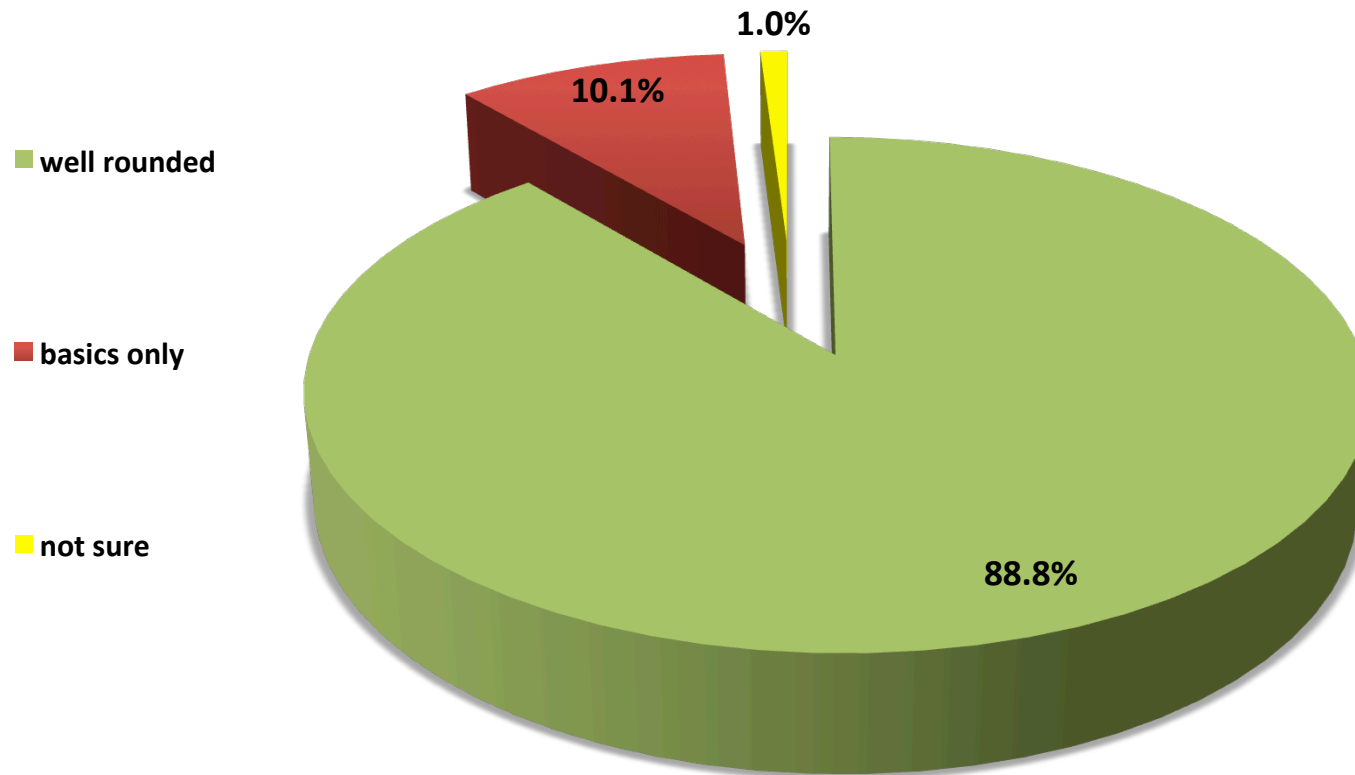
■ Not Sure

MONTANA VOTERS' PREFERRED USES OF SCHOOL ADMINISTRATORS'S TIME



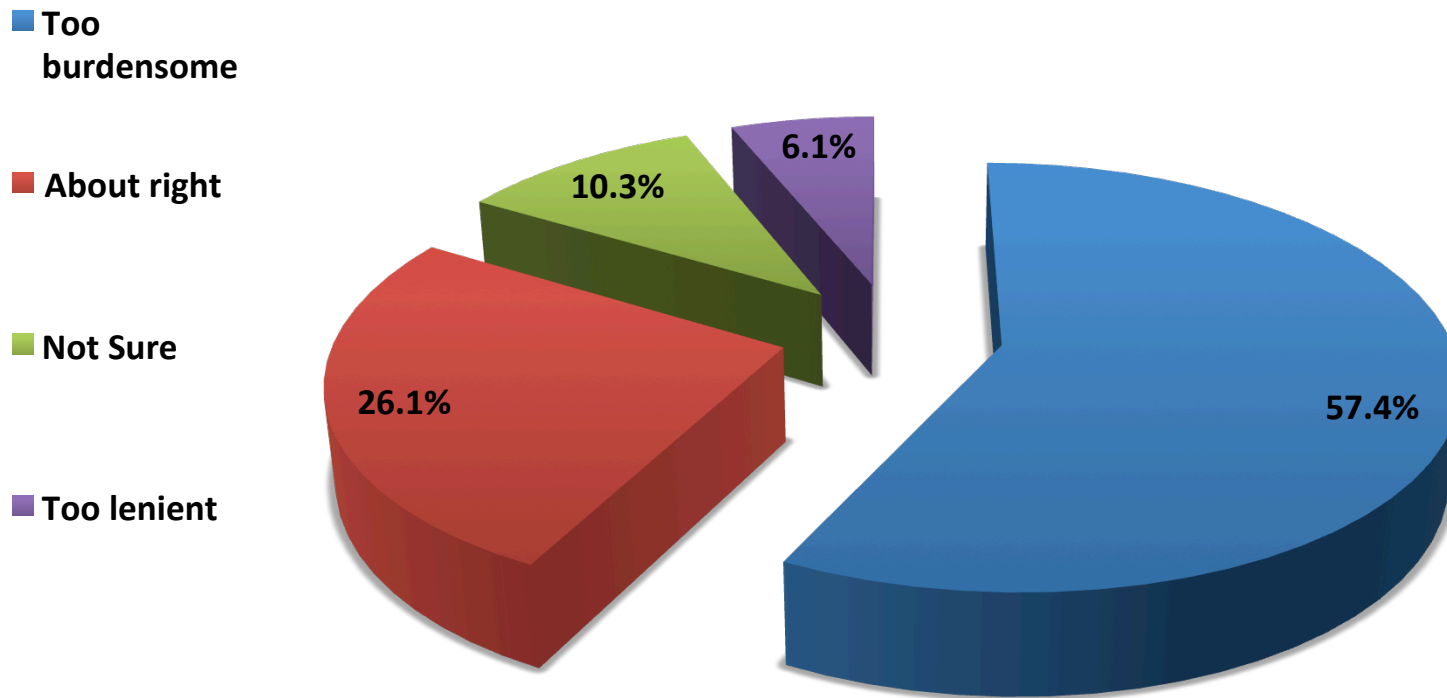
VOTERS OVERWHELMINGLY WANT K-12 PUBLIC EDUCATION TO BE WELL-ROUNDED, NOT JUST BASIC!

DO MONTANA VOTERS THINK PUBLIC EDUCATION SHOULD BE WELL ROUNDED OR BASIC?



VOTERS BELIEVE STATE AND FEDERAL MANDATES ARE TOO BURDENSOME

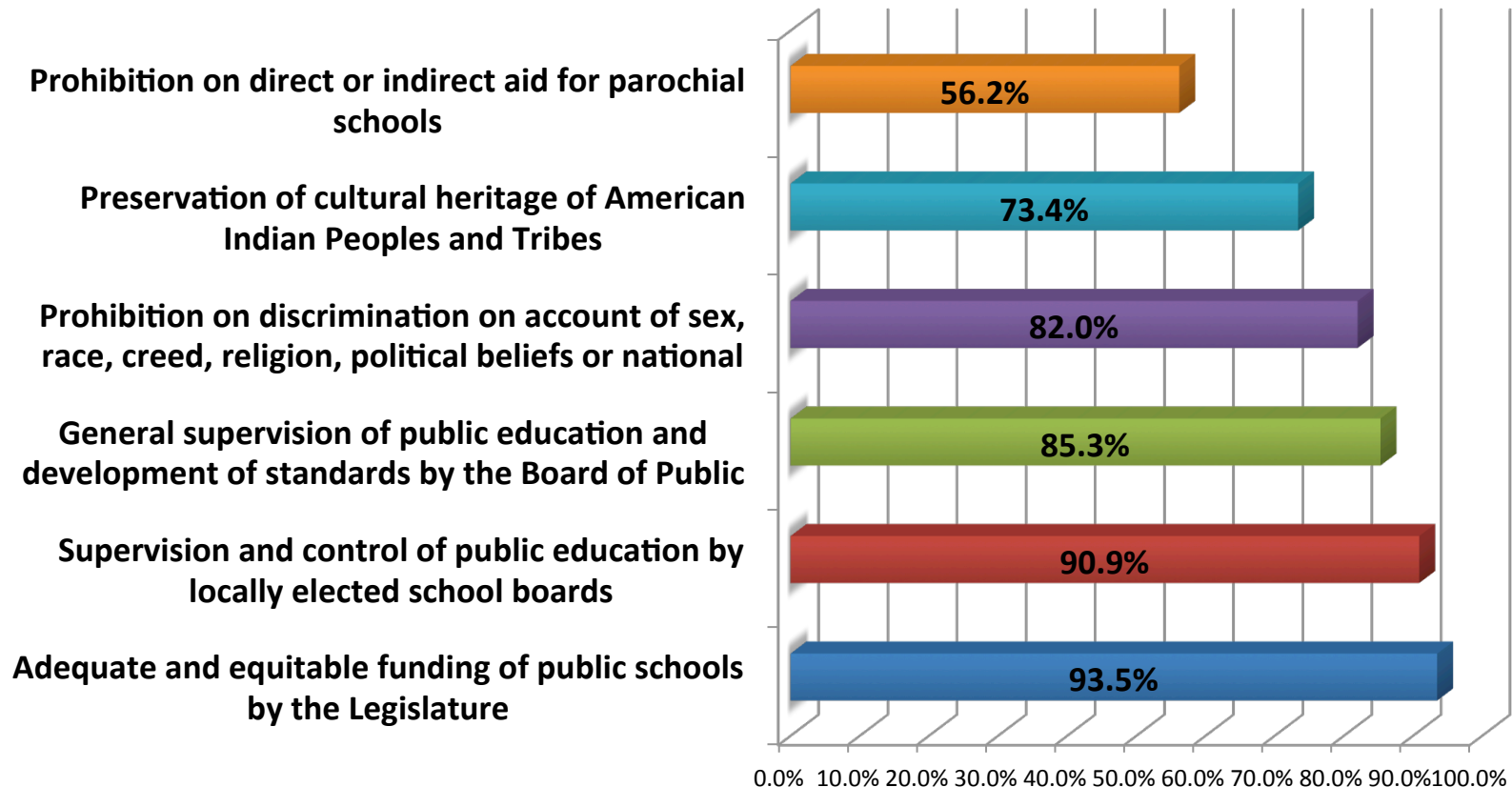
MONTANA VOTERS' OPINIONS ON STATE AND FEDERAL MANDATES



VOTERS SUPPORT K-12 CONSTITUTIONAL GUARANTEES

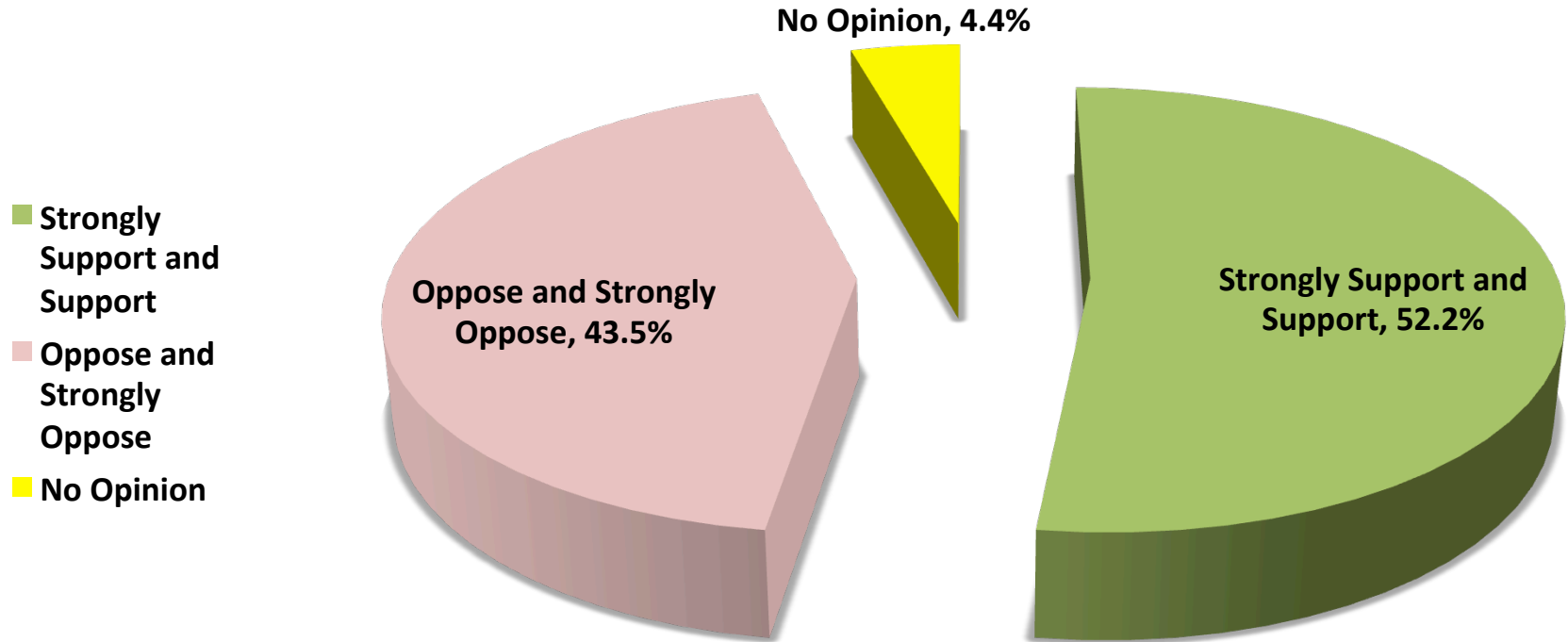
MONTANA VOTERS' OPINIONS REGARDING IMPORTANCE OF CONSTITUTIONAL GUARANTEES

(percent identifying very or somewhat important)



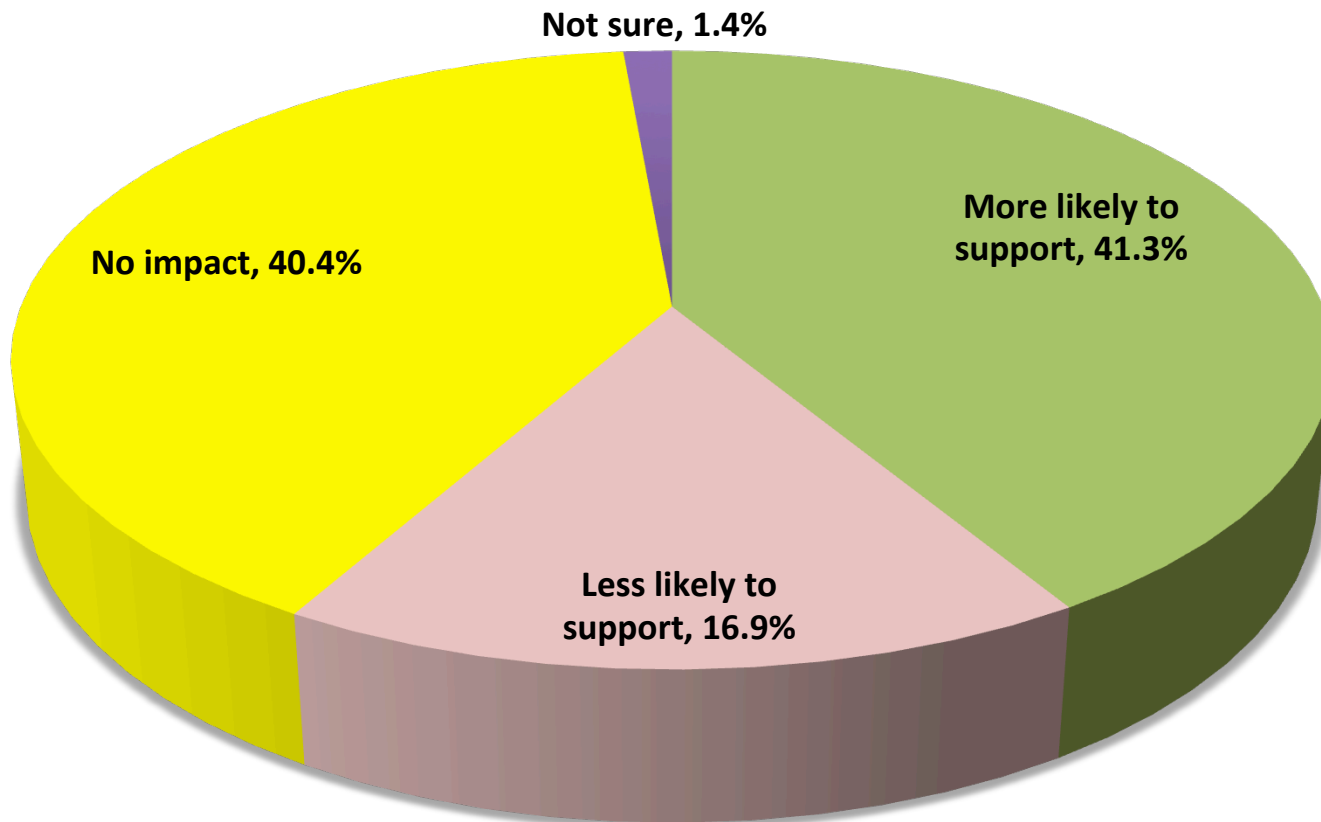
VOTERS SUPPORT GOVERNOR BULLOCK'S EARLY CHILDHOOD EDUCATION PROPOSAL

MONTANA VOTERS' OPINION REGARDING GOVERNOR BULLOCK'S
EARLY EDGE PROPOSAL



EFFECT ON VOTER SUPPORT OF GOVERNOR BULLOCK'S EARLY CHILDHOOD EDUCATION PROPOSAL – WHEN VOTERS LEARN MONTANA IS 1 OF 8 NOT CURRENTLY OFFERING PUBLIC FUNDING OF PRE-K

BULLOCK'S EARLY EDGE PROPOSAL - KNOWING MONTANA IS ONE OF EIGHT STATES WITH NO PUBLIC FUNDING FOR PRE-K FOR 4 YEAR OLDS - MAKES MONTANA VOTERS:



EFFECT ON VOTER SUPPORT OF GOVERNOR BULLOCK'S EARLY CHILDHOOD EDUCATION PROPOSAL – WHEN VOTERS LEARN PRE-K HAS LATER ACADEMIC AND SOCIETAL BENEFITS

BULLOCK'S EARLY EDGE PROPOSAL - KNOWING PRE-K RAISES IQ, ENHANCES MATH AND READING, LOWERS DROPOUT RATES AND DECREASES LATER ABUSE OF ALCOHOL AND DRUGS - MAKES MONTANA VOTERS:

